

EMPOWERING OUR WORLD
· WITH CLEAN ENERGY ·



KSN-EN-202411

Xiamen Kseng Metal Tech. Co., Ltd.
Xiamen Kseng New Energy Co., Ltd.

✉ info@xmkseng.com

☎ +86 0592-5777971 / +86 0592-5795673

🌐 www.xmkseng.com / www.ksengenergy.com

HQ Add: 6&11F, Huixin Wealth Centre, No. 891, Fanghu North 2nd Rd., Huli Dist., Xiamen, Fujian, China.

Factory Add1: No.1, Xinshiqiao Rd., Xiang'an Dist., Xiamen, Fujian, China.

Factory Add2: Intersection of Anyi Rd. & Wanxiang Rd., Wan'an Industrial Park, Zhangpu Cnty., Zhangzhou, Fujian, China.



Solar Racking & Tracking Systems Solution Provider

EMPOWERING OUR WORLD WITH CLEAN ENERGY



🔍 Kseng Solar

Catalogue

► About Us

Company Profile

- 01 About Kseng
- 02 Global Deployment
- 03 Enterprise Honor

Manufacturing Strength

- 05 Dual manufacturing bases
- 06 Vertical integrated Production

Premium Service

- 07 All-around Service

► Products

Roof Mounting System

- 09 Tile Roof Mounting System
- 11 Metal Roof Mounting System
- 13 Adjustable Tilt Roof Mounting System
- 15 Ballast Roof Mounting System

Ground Mounting System

- 17 Aluminum Ground Mounting System
- 19 Steel Ground Mounting System
- 21 Pile Ground Mounting System
- 23 Solar Carport Mounting System
- 25 Agricultural Mounting System
- 27 Vertical Ground Mounting System

KST Solar Tracker

- 29 KST-1P
- 30 KST-2PM

Accessory

- 31 Ground Screw & Auxiliary Accessories

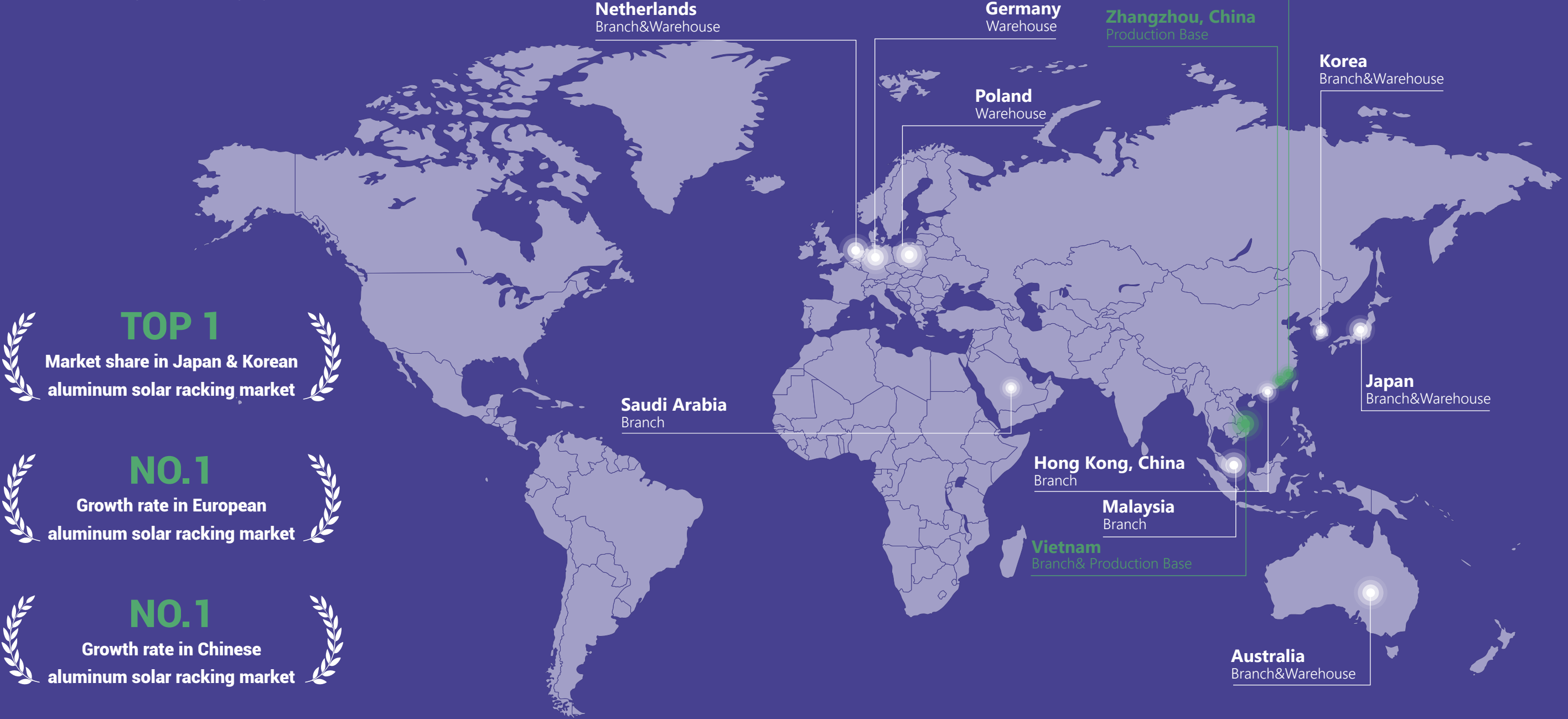
► Global Projects & Exhibitions

33 Global Projects

35 Global Solar Exhibitions

About Kseng

Solar Racking & Tracking Systems Solution Provider



TOP 1
Market share in Japan & Korean
aluminum solar racking market

NO.1
Growth rate in European
aluminum solar racking market

NO.1
Growth rate in Chinese
aluminum solar racking market

 **20GW**
Cumulative shipments

 **12GW**
Annual production capacity

 **8**
Branches & Offices

 **100+**
Covered countries

Verified PRO

 **6**
Warehouse

 **80+**
R&D engineers

 **700+**
Employees

 **2015**
Founded

Certification

        Relationships built on trust

Kseng has won the honorary titles of national and Xiamen high-tech enterprises, top ten solar racking suppliers, top ten most popular solar racking brands, etc.

Manufacturing Strength

Dual Manufacturing Bases



Vertical Integration

Whole industry chain of solar racking system



12GW

Annual production capacity of solar racking system



30000Tons

Annual production of aluminum alloy



Melting



Extrusion



Oxidation



Finishing



Shipment



Package



Assembly

📍 Zhangzhou, Fujian

📍 Xiamen, Fujian

Vertical integrated Production

Two self-owned state-of-the-art manufacturing bases in Xiamen and Zhangzhou, Fujian, equipped with advanced automated equipment and a strict quality control process, realizing the whole industry chain production of solar racking system.

5 Production Lines

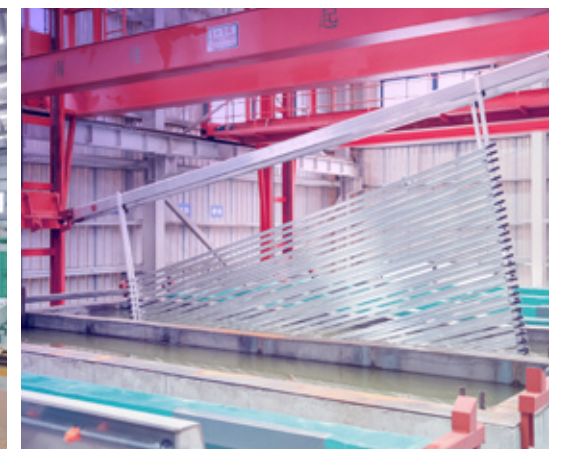
① Aluminum Solar Racking Production Line

② Tile Roof Hook Production Line

③ Solar Tracker Controller Production Line

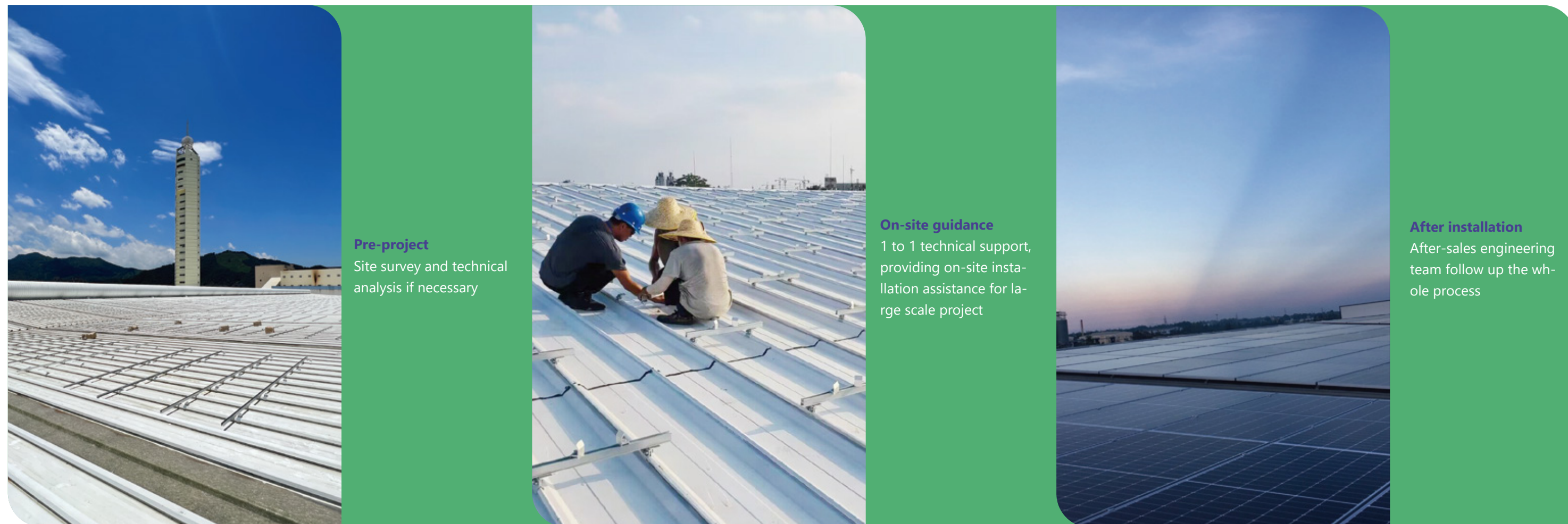
④ Steel Solar Racking Production Line

⑤ Ground Screw Production Line



All-around Service

Whole Process Engineering Service



Multilingual Team Support

365d*24h instant response in your language



Multilingual



365 days



24 hours

Full Coverage and Offering



Global engineering
Design standards
Differentiated customization

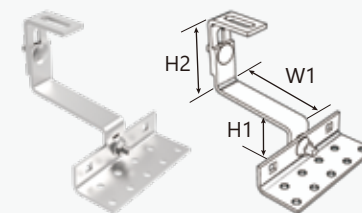


Design drawing provided
within 48 hours



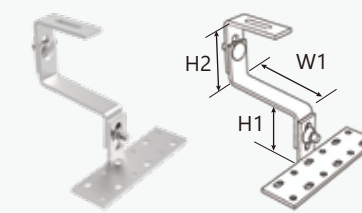
Complete technical
documents

Main Hooks



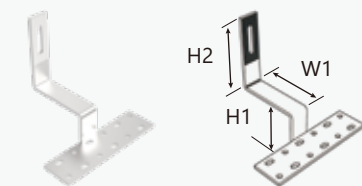
H1=40~51
H2=65~94
W1=115

Item number	Thickness	Material
RH-0036	5mm	SUS 304
Roof decking	Wood screw	Carriage bolts
Tiled roof	st6.3*80mm	M10*25*2



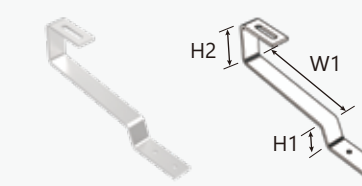
H1=45~82
H2=85~100
W1=115

Item number	Thickness	Material
RH-0009	5mm	SUS 304
Roof decking	Carriage bolts	
Tiled roof	M10*25*2	



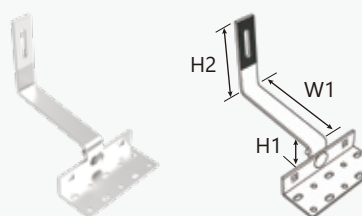
H1=51
H2=120
W1=106

Item number	Thickness	Material
RH-0001	5mm	SUS 304
Roof decking		
Tiled roof		



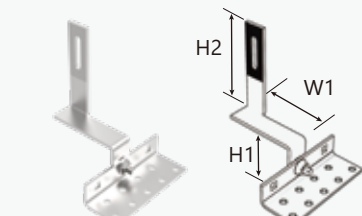
H1=32
H2=74
W1=183

Item number	Thickness	Material
RH-0016	5mm	SUS 304
Roof decking	Wood screw	
Tiled roof	st6.3*80mm	



H1=44~51
H2=120
W1=150

Item number	Thickness	Material
RH-0018	5mm	SUS 304
Roof decking	Wood screw	
Tiled roof	st6.3*80mm	



H1=53~60
H2=120
W1=76

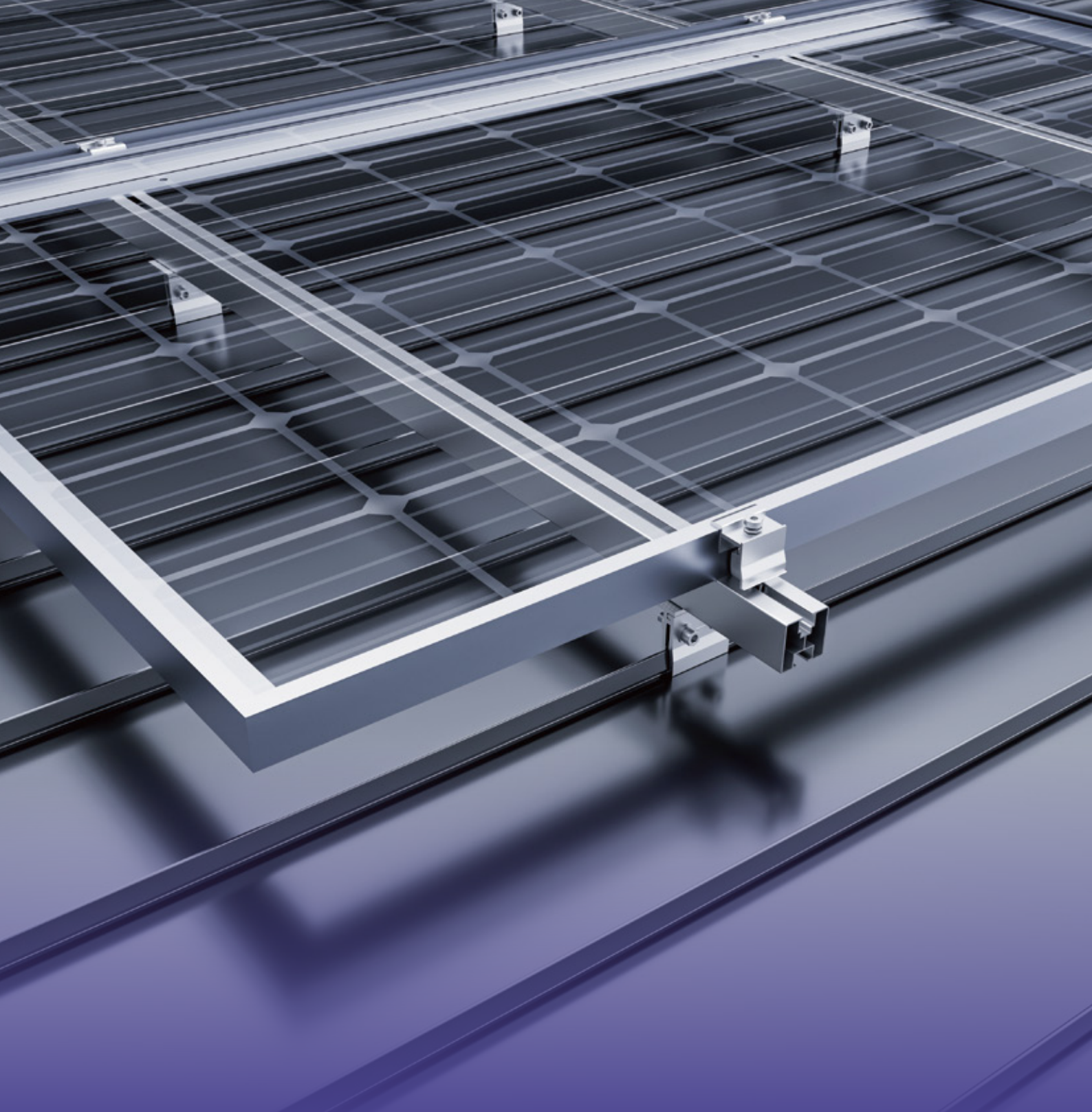
Item number	Thickness	Material
RH-0037	5mm	SUS 304
Roof decking	Carriage bolts	
Tiled roof	M10*25*1	

TILE ROOF MOUNTING SYSTEM

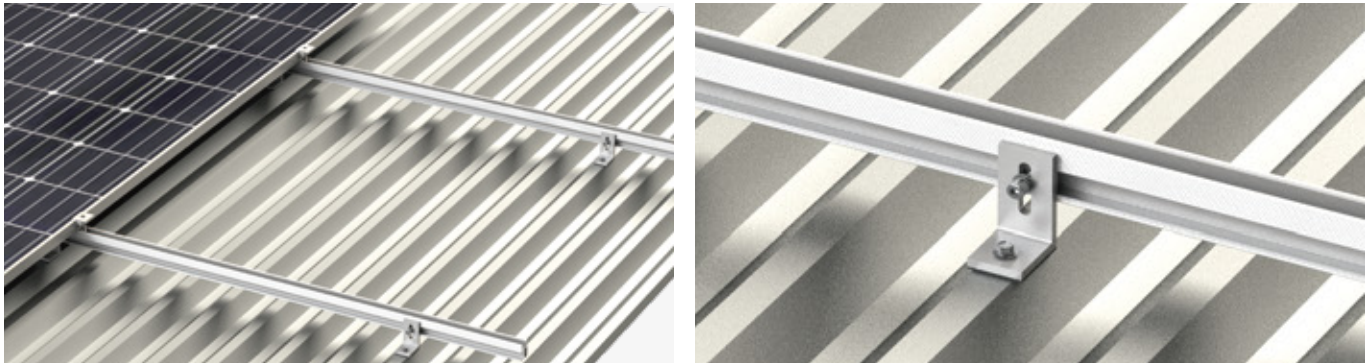
- 1 Suitable for both commercials and residential roof applications.
- 2 High grade anodized aluminum and stainless steel components.
- 3 Less accessories for easy installation, save the construction time and cost.

Specifications

Material	Standard	Warranty	Wind Speed & Snow Load	Applicable Module
Aluminum AL6005-T5 Stainless Steel SUS304	AS/NZS 1170 JISC8955-2017 and other international standards	10 Years Warranty, 25 Years Service Life	Up to 60m/s Up to 1.4 kn/m ²	Frame or Frameless



Rail solution



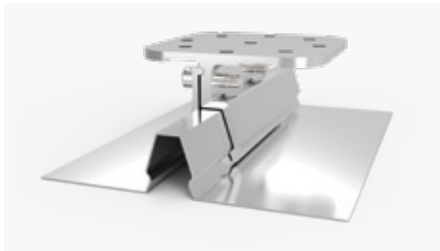
• L feet mount

Railless solution

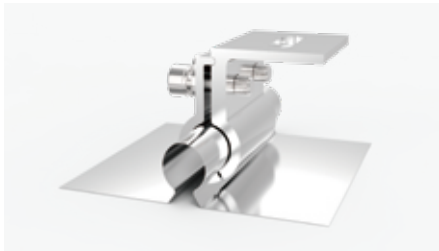


• Mini rail base

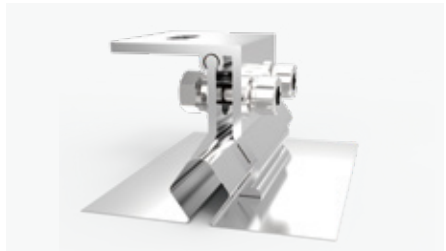
Various roof clamps



Item No.	Opening dimension
RF-0007	20.96mm



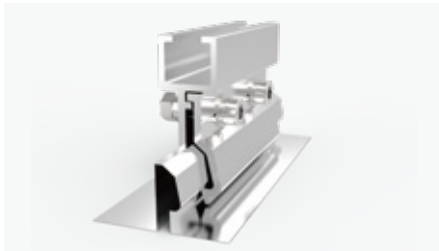
Item No.	Round seam dimension
RF-008	17.8mm



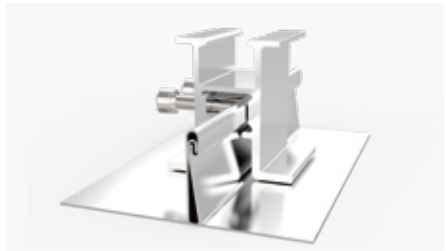
Item No.	Opening dimension
RF-0016	18.5mm



Item No.	Opening dimension
RF-0027	5.32mm



Item No.	Opening dimension
RF-0036	12.63mm

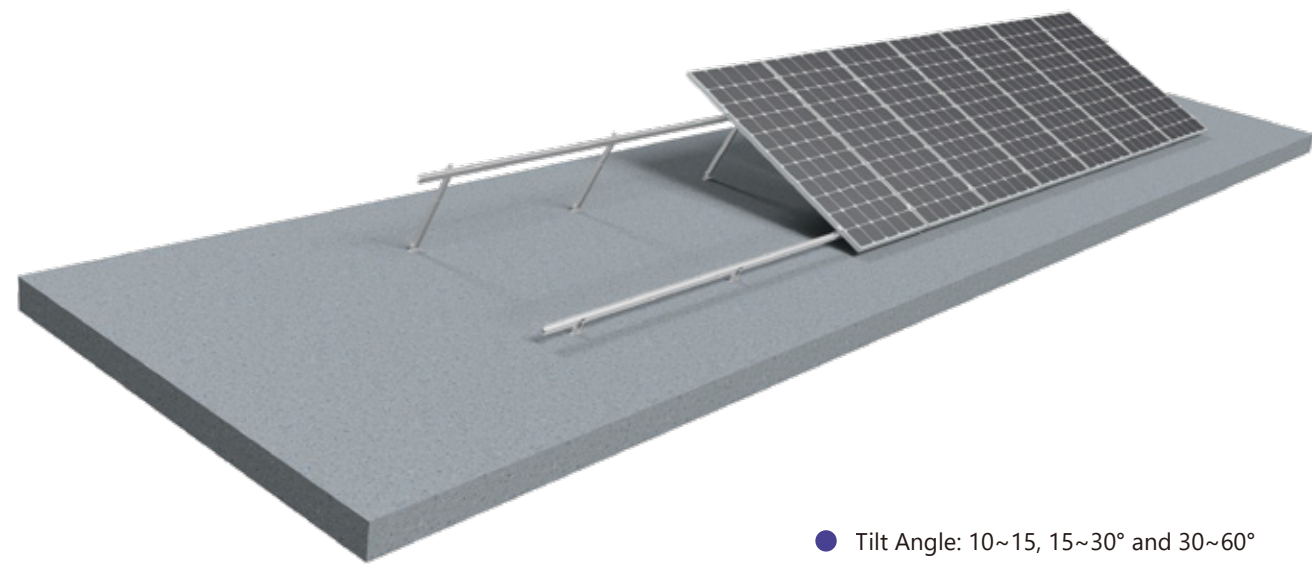


Item No.	Opening dimension
RF-0042	

METAL ROOF MOUNTING SYSTEM

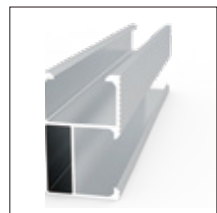
- 1 Various roof clamps for different metal roof applications.
- 2 Both rail or rail-free solution is available for specific need.
- 3 Light weight system for quick and easy installation.

ADJUSTABLE TILT ROOF MOUNTING SYSTEM

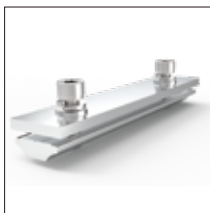


● Tilt Angle: 10~15, 15~30° and 30~60°

Components



Rail



Rail Connector



Front Leg



End Clamp



Mid Clamp



Rear Leg

Features

- 1

Adjustable angle
Specific adjustable angle range to optimize overall solar power yield
- 2

High-quality material
High-quality aluminum material, with excellent anti-corrosion performance and long service life
- 3

Lightweight
Easy transportation and installation
- 4

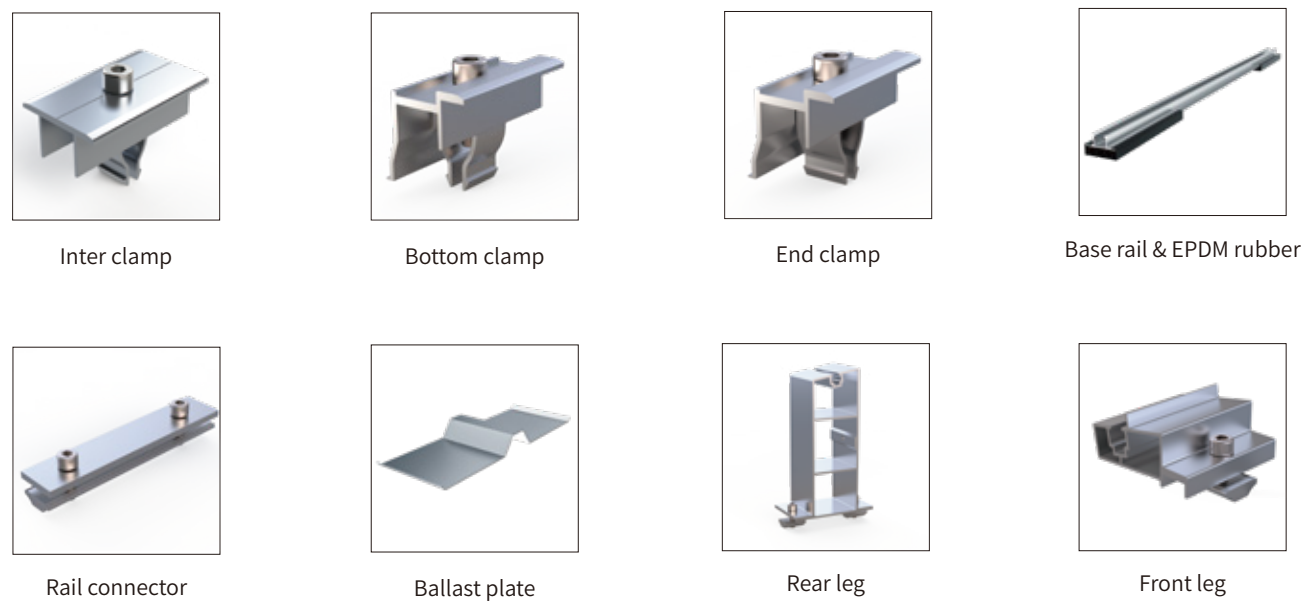
Easy installation
Simple and quick installation by attaching the clamps to the roof

Specifications	Material	Standard	Warranty	Wind Speed & Snow Load	Applicable Module
	Aluminum AL6005-T5 Stainless Steel SUS304	AS/NZS 1170 JISC8955-2017 and other international standards	10 Years Warranty, 25 Years Service Life	Up to 60m/s Up to 1.4 kn/m ²	Frame or Frameless





Components



Features

- 1 Non-penetrating design
Non-penetrating design won't cause any roof damage
- 2 Protecting windshield
Windshield is available for protect the whole system
- 3 Cost effective
East-west ballast mounting on the flat rooftop allowing for greater energy production
- 4 Pre-assembly
Maximum pre-assembled to save construction time and labor cost

Specifications

Material	Standard	Warranty	Wind Speed & Snow Load	Applicable Module
Aluminum AL6005-T5, Stainless SteelSUS304	AS/NZS 1170 JISC8955-2017 and other international standards	10 Years Warranty, 25 Years Service Life	Up to 60m/s Up to 1.4 kn/m²	Frame or Frameless



Components



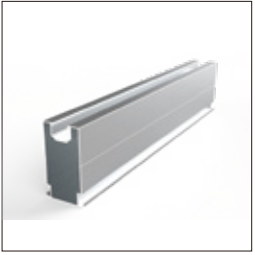
R001



R005



R013



R034



R007



R052



R009



R036

Features

- 1

Pre-assembled
Maximum pre-assembly to ensure quick and easy installation
- 2

Optional foundation
Ground screws or concrete foundation
- 3

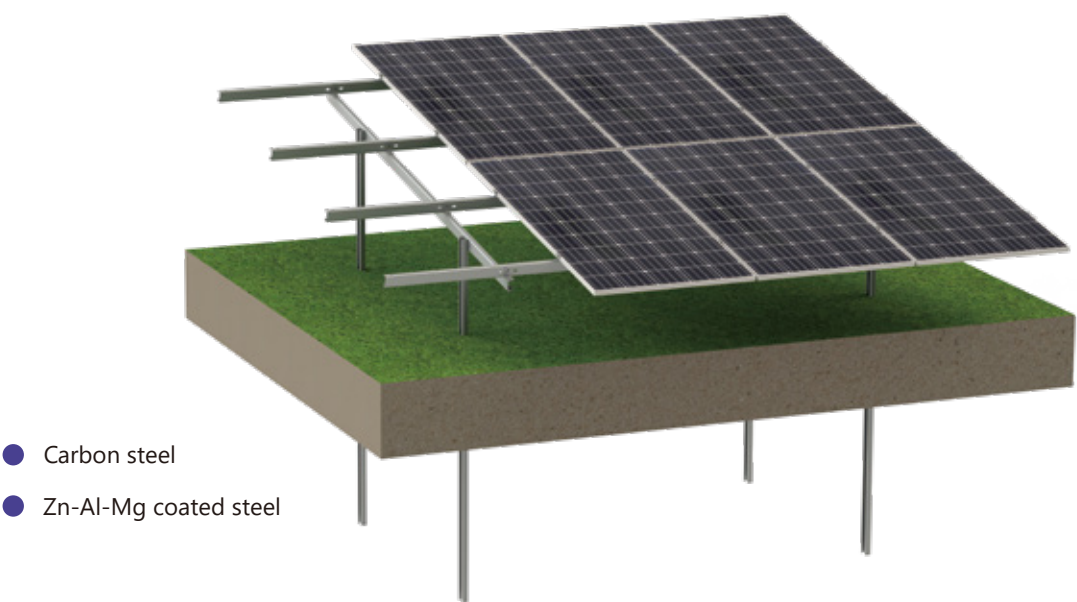
High-quality material
Aluminum structure allows excellent anti-corrosion performance and long service life
- 4

Great flexibility
Great fle xibility for different terrains, such as golf courses and slope ground

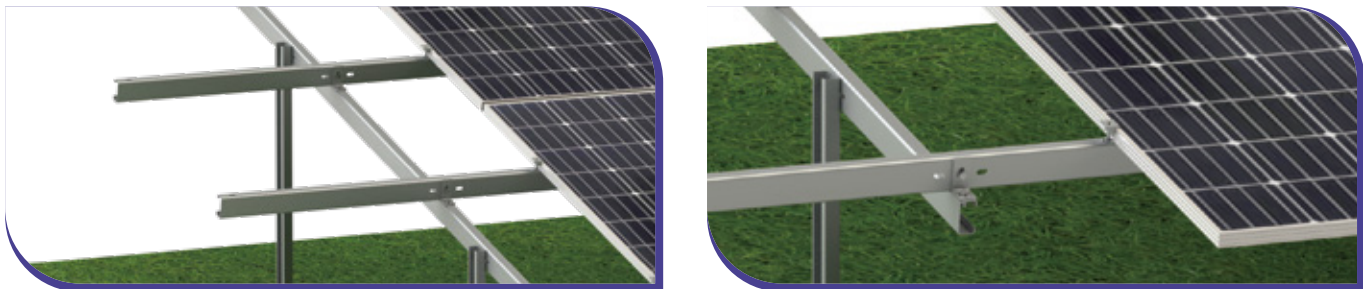
Specifications

Material	Standard	Warranty	Foundation
Aluminum AL6005-T5 Stainless Steel SUS 304	AS/NZS 1170 JISC8955-2017 and other inter- national standards.	10 Years Warranty, 25 Years Service Life	Screw or Concrete foundation

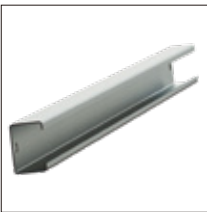




Details



Components



Pillar



Beam



Rail



Rail Connector



Connector



Mid Clamp



End Clamp



Features



Economical solution
Most economical ground mounting system



Competitive price
Made of lower-cost carbon steel & MAC steel



Suitable for any soil type
Suitable for any soil type, can be installed on even or uneven slopes



Modular design
Modular design allows for simple and easy installation

Specifications

Material

Zn-Al-Mg coated steel or Q235B carbon steel

Standard

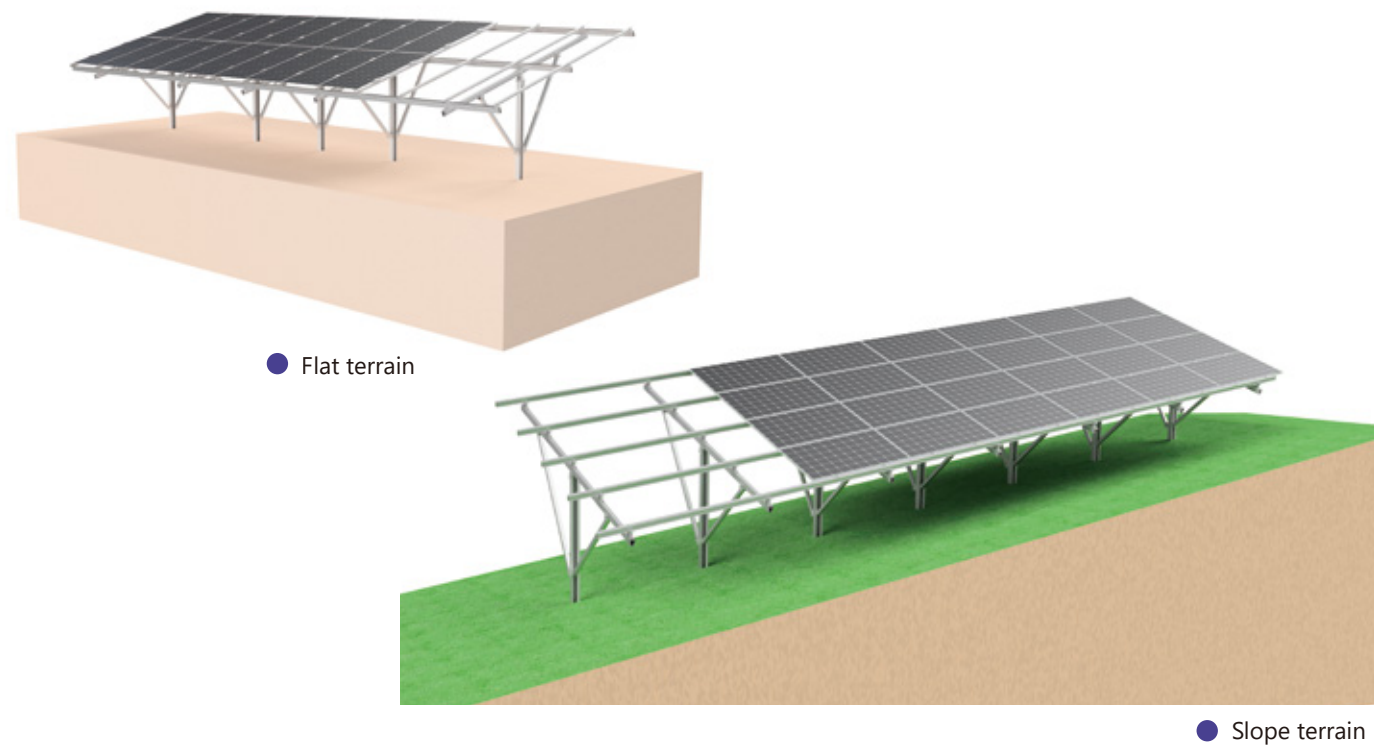
AS/NZS 1170 JISC8955-2017 and other international standards.

Warranty

10 Years Warranty, 25 Years Service Life

Foundation

Screw or Concrete foundation



Adjustable fixture



Features

- 1 Ideal solution
Ideal solution for flat ground, uneven complex terrain and slope conditions
- 2 Corrosion-resistant
Highly corrosion-resistant aluminum structure and galvanized steel post
- 3 Saving cost
Highly pre-assembly to save on-site installation time and labor cost
- 4 Wide applications
Applicable for terrain with 0-60° tilt angle from east-west direction

Specifications	Material	Standard	Warranty	Foundation
	Aluminum AL6005-T5 and Q235B carbon steel	AS/NZS 1170 JISC8955-2017 and other inter-national standards.	10 Years Warranty, 25 Years Service Life	Screw or Concrete foundation



Optional Structure



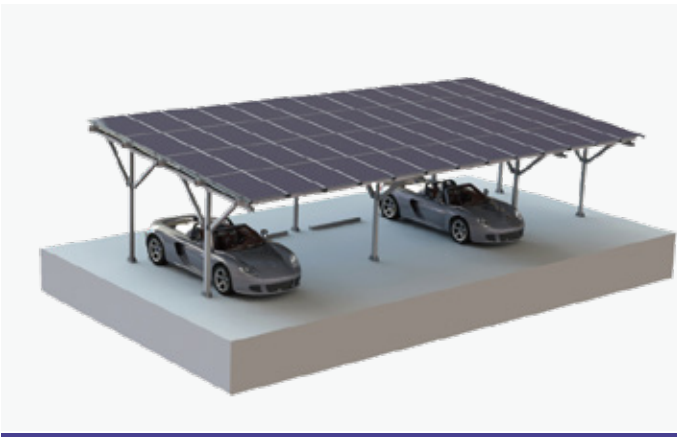
IV Type



W Type



N Type



Y Type

*The structure can be adjusted according to specific needs

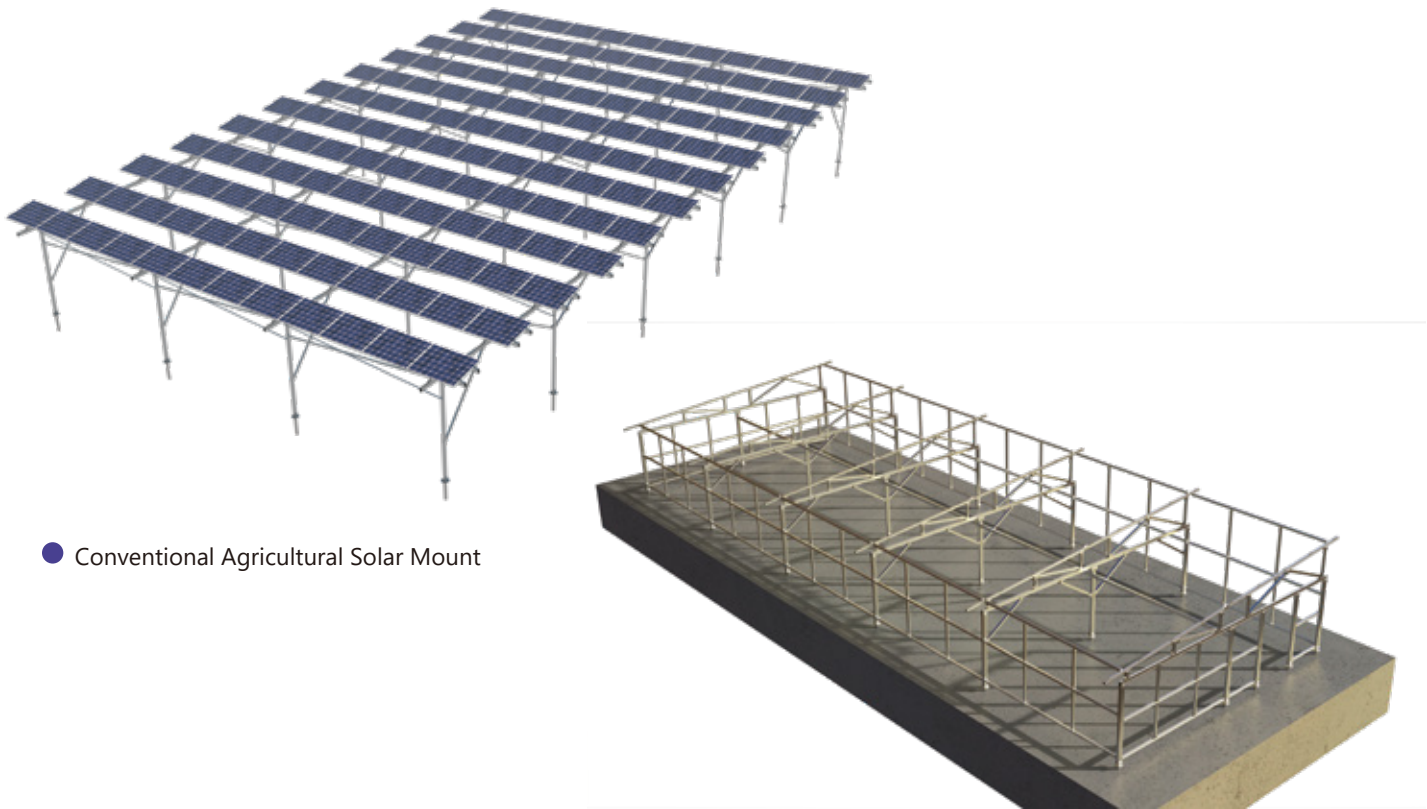


Features

- 1 Win-win solution
Win-win solution to effectively use the space while generating electricity
- 2 Waterproof design
Fully waterproof design for framed module installation
- 3 Flexible structure
Suitable for different topographic conditions
- 4 Optional foundation
Various foundation options include precast concrete, bored pier and ground screw

Specifications

Material	Standard	Warranty	Foundation
Aluminum AL6005-T5 Stainless Steel SUS 304	AS/NZS 1170 JISC8955-2017 and other inter- national standards.	10 Years Warranty, 25 Years Service Life	Screw or Concrete foundation



● Conventional Agricultural Solar Mount

● Greenhouse Solar Mount

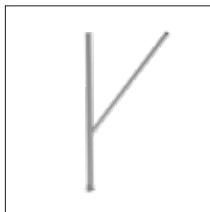
Components



Rail



Pre-assembled Beam



Pre-assembled Support



Tripod



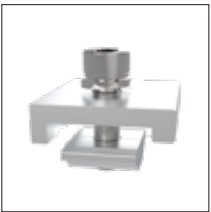
Angel Support



Rail Connector



Beam Splice



Rail Clamp

Features



Perfect combination
Perfect combination for both power generation and cultivation



Cost savings
Significant saving time & labor cost by pre-assembled components

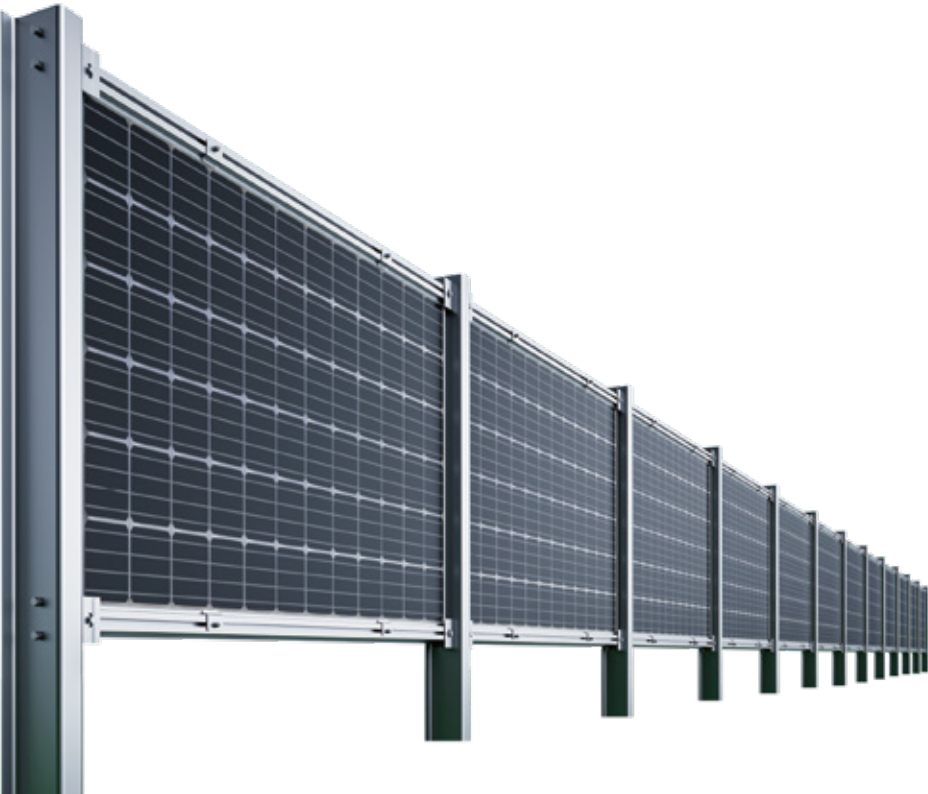


Customize layout
Customized layout to satisfy the different light exposure requirements of plants



Strong adaptability
Max span can up to 5-6 meters, accessible for agricultural vehicles and manual operations

Specifications	Material	Standard	Warranty	Foundation
	Aluminum AL6005-T5 Stainless Steel SUS 304	AS/NZS 1170 JISC8955-2017 and other international standards.	10 Years Warranty, 25 Years Service Life	Screw or Concrete foundation



Details



Components



Clamp



Cross Bar



Pile



Rail Joint

Features



Stable structure
Stable vertical structure suits for high-latitude snowy areas



Optimal utilization
Combined use in agriculture and animal husbandry for optimal land utilization



Great compatibility
Supports monofacial & bifacial modules



Quick installation
Minimize components for quick installation

Specifications

Material

Hot-dip
Galvanized
Steel + AL6005-T5

Snow load

2KN/m²

Foundation

Pile foundation

Wind speed

60m/s



KST SERIES **KST-1P**

ONE PORTRAIT HORIZONTAL SINGLE-AXIS TRACKER

Cost-effective, stable & efficient system

- 1 Fully fit for 210 module
- 2 Easy installation & maintenance
- 3 AI algorithm to maximize power generation
- 4 Adapt to various terrains allowing a north-south slope up to 20%



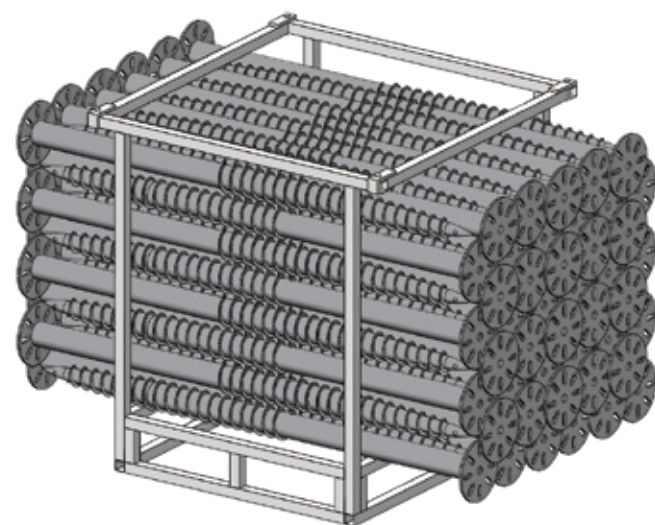
KST SERIES **KST-2PM**

MULTI-DRIVE - DOUBLE PORTRAIT HORIZONTAL SINGLE-AXIS TRACKER

Multi-drive, strong wind-resistance capability

- 1 Fully fit for 210 module
- 2 Easy installation & maintenance
- 3 AI algorithm to maximize power generation
- 4 Adapt to various terrains allowing a north-south slope up to 20%

HOT-DIP GALVANIZED STEEL GROUND SCREW



Ground Screw with Large Blades

- Applicable for Mellow or Sandy Ground

Material	Hot Dip Galvanized Q235B
Outer Diameter	76mm
Thickness	3-4mm
Length	1000-3600mm(Adjustable or not)
Flange Diameter	200mm&220mm



Adjustable Ground Screw

- Applicable for Uneven Ground

Material	Hot Dip Galvanized Q235B
Outer Diameter	76mm
Thickness	3-4mm
Length	1000-3600mm(Adjustable or not)
Flange Diameter	200mm&220mm
Nut Diameter	M12*40



Common Ground Screw

- Applicable for Ordinary Ground

Material	Hot Dip Galvanized Q235B
Outer Diameter	76mm, 89mm, 102mm
Thickness	3-4mm
Length	1000-3600mm(Adjustable or not)
Flange Diameter	200mm&220mm

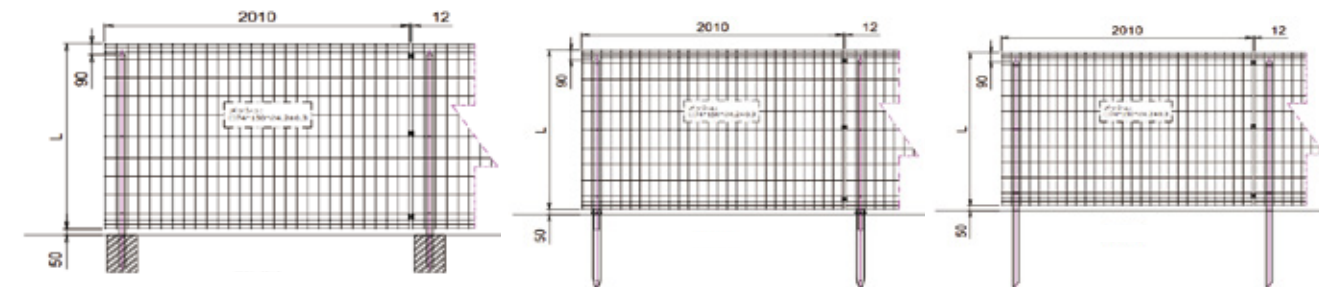


Adjustable Ground Screw with Large Blades

- Applicable for Uneven Mellow or Sandy Ground

Material	Hot Dip Galvanized Q235B
Outer Diameter	76mm
Thickness	3-4mm
Length	1000-3600mm(Adjustable or not)
Flange Diameter	200mm&220mm
Nut Diameter	M12*40

SOLAR FENCE



► Concrete Foundation

► Ground Screw Foundation

► Integral Pile Foundation

Material	Height(mm)	Color
Plastic dipping steel Q235	1000mm 1200mm 1500mm	White Brown
Galvanized steel Q235	1800mm 2000mm	Silver Green

Features

- 1 Easy installation
- 2 Short lead time
- 3 Advanced design
- 4 High corrosion resistance and sturdy

GROUND COVER (WEED MAT)



Material	Color	Specification	Thickness
PET	Green or Black	Width 1.5m Length 5m	1mm 1.5mm 2mm

- 1 Weed control
- 2 Protect ground mounting system
- 3 Easy to install
- 4 5-10 years service life

PV CABLE

TUV/JET certificates. High resistance to UV, water, ozone, fluids,salt, general weathering.



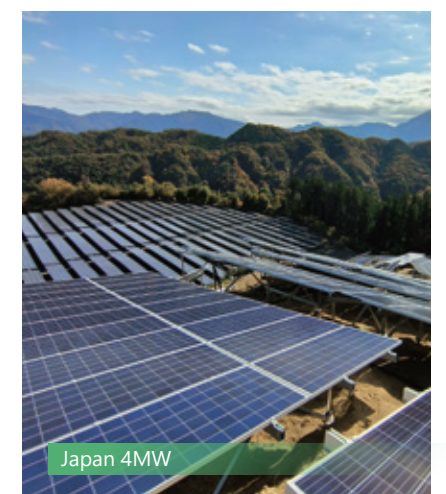
PV STORAGE SYSTEM

A low-voltage lithium battery for small commercial and residential uses.



GLOBAL PROJECTS^o

- Solar Fixed Structure / • Solar Tracker



GLOBAL SOLAR EXHIBITIONS^o



2024 Malaysia



2024 Philippine



2024 Germany



2024 Spain



2024 Xiamen, China



2024 UK



2024 Tokyo, Japan



2024 Italy



2024 Saudi Arabia